



MONTHLY MEMBERSHIP PROGRESS REPORT

District 9 NC

Results as of: 01/31/2018

GMT: MICHAEL MOLEND

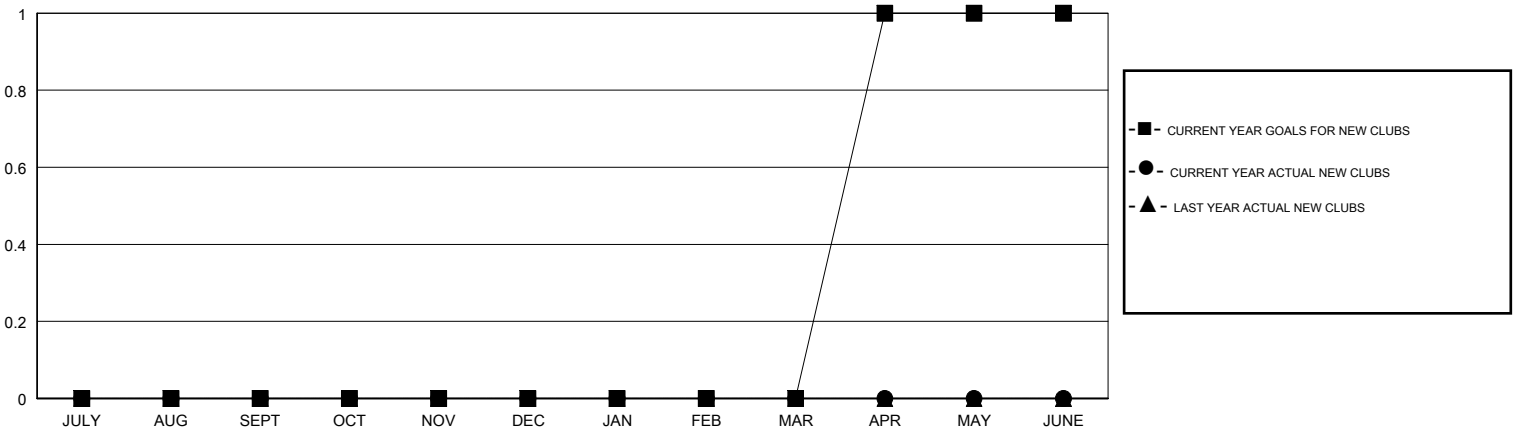
LOCATION IOWA

GMT CA

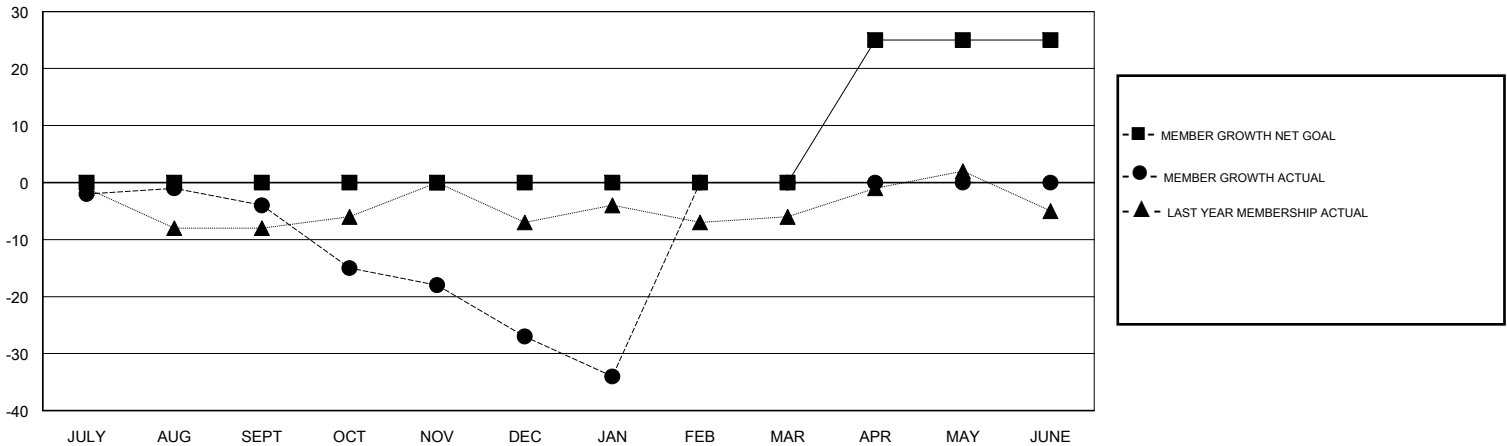
Clubs			
RESULTS FOR 2017-2018			
QUARTER	NEW CLUB GOAL	NEW CLUBS	DROPPED CLUBS
JULY/AUG/SEPT	0	0	0
OCT/NOV/DEC	0	0	1
JAN/FEB/MAR	0	0	0
APR/MAY/JUNE	1	0	0

Members			
RESULTS FOR 2017-2018			
QUARTER	MEMBER GROWTH NET GOAL	MEMBER GROWTH ACTUAL	DROPPED MEMBERS ACTUAL (including transfers)
JULY/AUG/SEPT	0	15	17
OCT/NOV/DEC	0	18	39
JAN/FEB/MAR	0	9	15
APR/MAY/JUNE	25	0	0

GOALS AND ACTUAL NEW CLUBS CUMULATIVE



GOALS AND ACTUAL MEMBERS CUMULATIVE



DROPPED CLUBS: 1	18 CLUBS OF 46 ADDED 1 OR MORE NEW MEMBERS	<u>GENDER DISTRIBUTION</u> MALE 911 (78.26%) FEMALE 253 (21.74%) Women Percentage Fiscal Year Goal: 23%
<u>DROPPED MEMBERS</u> DECEASED 12 CLUB CANCELLED 9 OTHER 50 TOTAL 71	CLICK HERE FOR CUMULATIVE MEMBERSHIP DATA	TOTAL FAMILY UNIT MEMBERS 179 FAMILY MEMBERS PAYING HALF DUES 90